



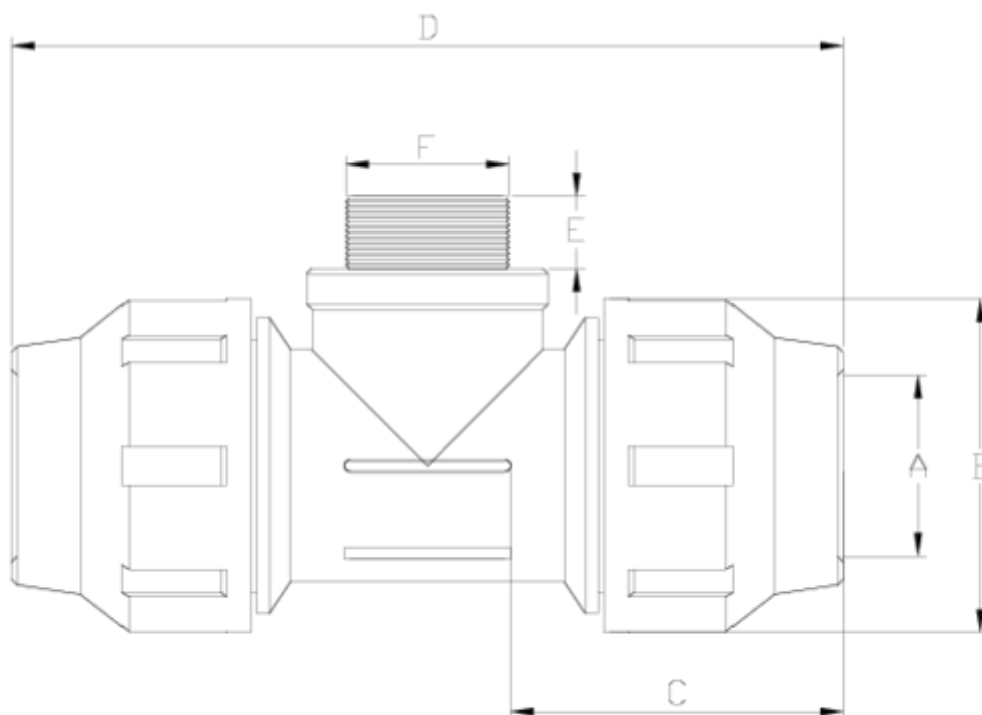
PP compression fittings

Tee, male threaded outlet

ITEM 486

REFERENCE	DESCRIPTION	Net weight	Volumen (m ³)	contenido.peso bruto	Unidades lote
112E100	TEE, MALE THREAD 20-1/2" GREY	0.097	0.041172	9.61	90
112E101	TEE, MALE THREAD 25-3/4" GREY	0.154	0.047171	11.54	70
112E102	TEE, MALE THREAD 32-1" GREY	0.218	0.036484	8.548	36
112E103	TEE, MALE THREAD 40-1 1/4" GREY	0.385	0.036816	10.245	25
112E104	TEE, MALE THREAD 50-1 1/2" GREY	0.57	0.044603	9.95	16
112E105	TEE, MALE THREAD 63-2" GREY	1.073	0.047171	11.49	10
112E106	TEE, MALE THREAD 75-2 1/2" GREY	1.797	0.061499	17.153	9
112E107	TEE, MALE THREAD 90-3" GREY	2.822	0.04836	12.128	4
112E108	TEE, MALE THREAD 110-4" GREY	4.366	0.044603	9.562	2
112E189	TEE, MALE THREAD 20-3/4" GREY	0.102	0.041172	10.06	90





ITEM 486 | Tee, male threaded outlet

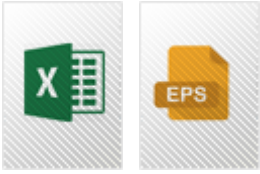
Código	f tubo - F	Peso (g)	A	B	C	D	E	PN	TIPO ROSCA
12E100	20 - 1/2"	94	21	46	58	137	15	PN16	BSP
12E189	20 - 3/4"	96	21	46	58	137	16	PN16	BSP
12E101	25 - 3/4"	155	26	55	66	156	16	PN16	BSP
12E102	32 - 1"	218	33	64	70	170	19	PN16	BSP
12E103	40 - 1 1/4"	351	42	76	84	208	21	PN16	BSP
12E104	50 - 1 1/2"	567	51	91	94	235	21	PN16	BSP
12E105	63 - 2"	948	64	109	105	274	25	PN16	BSP
12E106	75 - 2 1/2"	1756	77	133	136	344	30	PN10	BSP
12E107	90 - 3"	2822	92	159	166	416	36	PN10	BSP
12E108	110 - 4"	4366	112	183	174	465	40	PN10	BSP



ITEM 486 | Tee, male threaded outlet



Product Documents



Product Certificates

Company Certificates

