

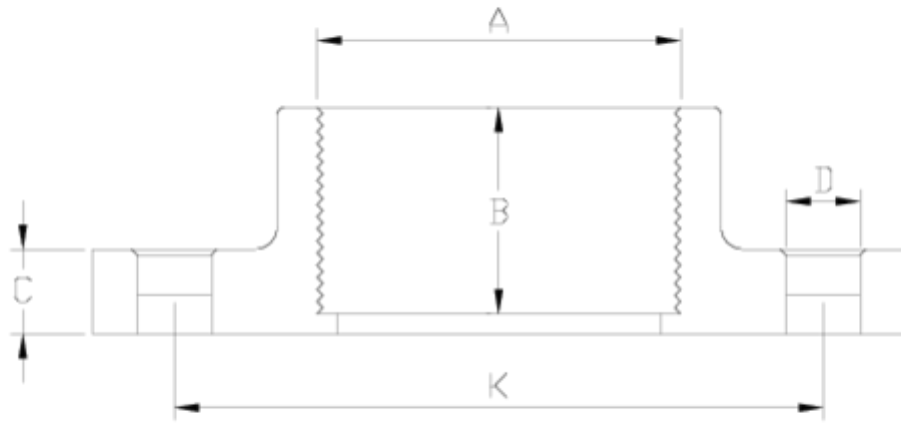


Flanges and adaptors

Reinforced compact flange, female threaded ITEM 071



REFERENCE	DESCRIPTION	Net weight	Volumen (m ³)	contenido.peso bruto	Unidades lote
1010055	COMPACT FLANGE,F.THREAD REINF. 1 1/2"	0.367	0.03129	15.25	40
1010056	COMPACT FLANGE,F.THREAD REINF. 2"	0.503	0.03682	18.66	36
1010057	COMPACT FLANGE,F.THREAD REINF. 2 1/2"	0.588	0.04117	14.75	24
1010058	COMPACT FLANGE,F.THREAD REINF. 3"	0.882	0.06347	27.24	30
1010059	COMPACT FLANGE,F.THREAD REINF. 4"	1.061	0.06347	19.74	18



ITEM 071 | Reinforced compact flange, female threaded

Código	A	Peso (g)	B	K	C	D	PN	ROSCA
10055	1 1/2"	384	29	110	18	4x18	PN10	BSP
10056	2"	445	30	125	18	4x18	PN10	BSP
10057	2 1/2"	612	30	145	19	4x18	PN10	BSP
10058	3"	789	35	146-160	21	8x18	PN10	BSP
10059	4"	1045	39	178-190	23	8x18	PN10	BSP



Product Documents



Product Certificates

Company Certificates

