

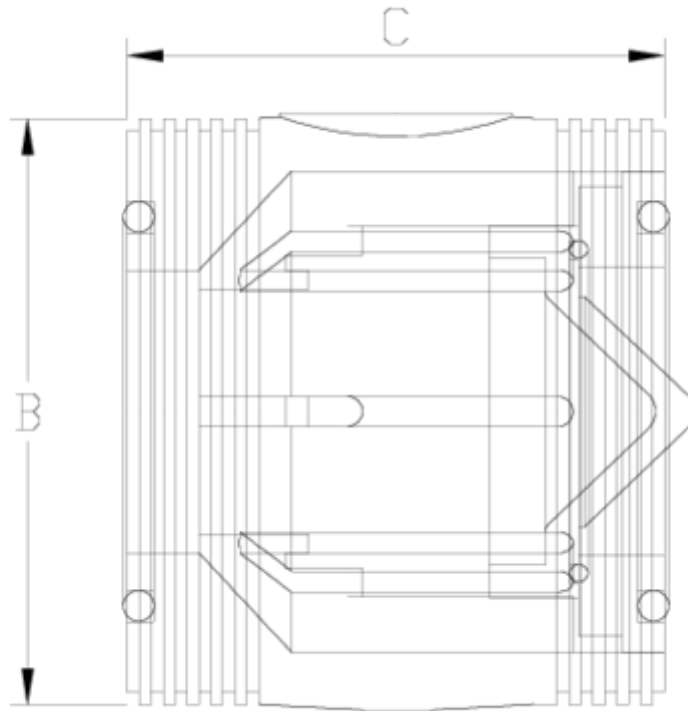


## Spare parts

# Main body check valve - FPM seal ITEM 280



REFERENCE	DESCRIPTION	Net weight	Volumen (m <sup>3</sup> )	contenido.peso bruto	Unidades lote
1016801	EPDM CHECK V. (W/S),MAIN BODY 20 FPM	0.068	0.008918	2.2	30
1016802	EPDM CHECK V. (W/S),MAIN BODY 25 FPM	0.07422	0.008918	1.6244	20
1016803	EPDM CHECK V. (W/S),MAIN BODY 32 FPM	0.229	0.015532	4.36	30
1016804	EPDM CHECK V. (W/S),MAIN BODY 40 FPM	0.229	0.008918	3.346	14
1016805	EPDM CHECK V. (W/S),MAIN BODY 50 FPM	0.3	0.015532	4.74	15
1016806	EPDM CHECK V. (W/S),MAIN BODY 63 FPM	0.5	0.022435	6.54	12
1016807	EPDM CHECK V. (W/S),MAIN BODY 75 FPM	1.07	0.031294	4.84	4
1016808	EPDM CHECK V. (W/S),MAIN BODY 90 FPM	1.65	0.022435	7.14	4



## ITEM 280 | Main body check valve - FPM seal

Código Vitón	d	Peso	B	C	PN	MEDIDA
16801	20	60	42	44	PN16	MÉTRICO
16802	25	74	47	48	PN16	MÉTRICO
16803	32	145	57	66	PN16	MÉTRICO
16804	40	229	71	71	PN16	MÉTRICO
16805	50	297	82	77	PN16	MÉTRICO
16806	63	495	98	90	PN16	MÉTRICO
16807	75	1495	127	120	PN10	MÉTRICO
16808	90	2249	151	141	PN10	MÉTRICO



## Product Documents



## Product Certificates

## Company Certificates

