

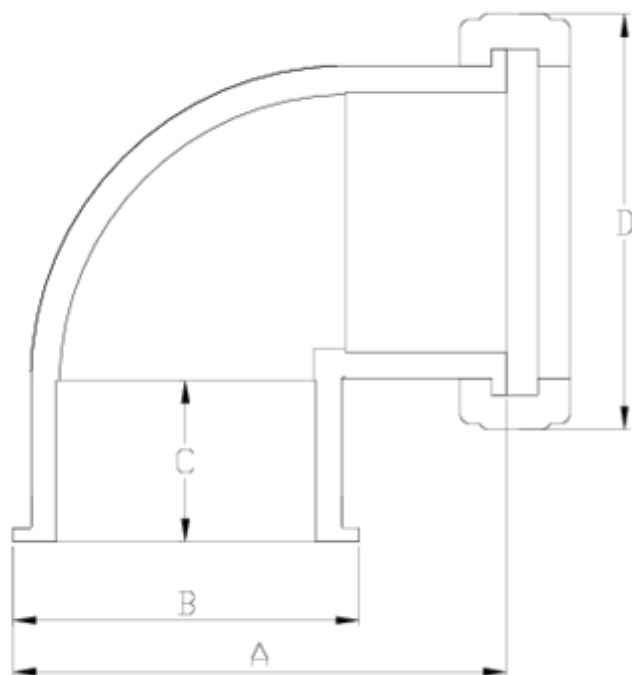


## Netvitc System® butterfly valves

# Netvitc System/FLANGE 90° elbow ITEM 637



REFERENCE	DESCRIPTION	Net weight	Volumen (m <sup>3</sup> )	contenido.peso bruto	Unidades lote
109N400	ASSEMBLY FLANGE, NET.SYS. 90° ELBOW 90	1.118	0.047171	5.232	4
109N401	ASSEMBLY FLANGE, NET.SYS. 90° ELBOW 110	1.611	0.047171	7.274	4
109N403	ASSEMBLY FLANGE, NET.SYS. 90° ELBOW 125	2.052	0.044603	9.038	4
109N404	ASSEMBLY FLANGE, NET.SYS. 90° ELBOW 140	3.238	0.04717	7.048	2
109N405	ASSEMBLY FLANGE, NET.SYS. 90° ELBOW 160	4.29175	0.061499	9.504	2
109N406	ASSEMBLY FLANGE, NET.SYS. 90° ELBOW 200	7.045	0.08677	16.13	2



## ITEM 637 | Netvitc System/FLANGE 90° elbow

CÓDIGO	f	BRIDA	PESO	A	B	C	D	PN	MEDIDA
9N400	90	90	1118	159	121	51	164	PN10	MÉTRICO
9N401	110	110	1611	195	144	61	188	PN10	MÉTRICO
9N403	125	125	2052	210	159	69	203	PN10	MÉTRICO
9N404	140	140	3004	242	177	76	224	PN10	MÉTRICO
9N405	160	160	3725	275	201	86	251	PN10	MÉTRICO
9N406	200	200	5662	333	251	106	297	PN6	MÉTRICO



## Product Documents



## Product Certificates

## Company Certificates

