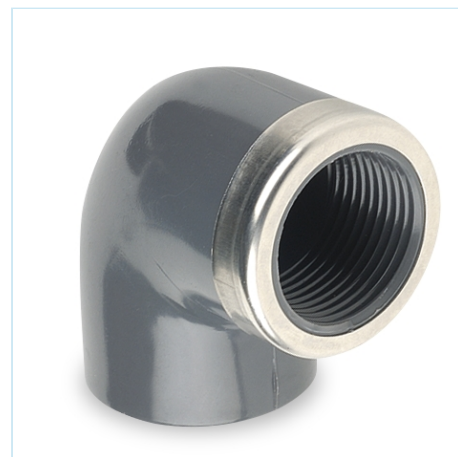




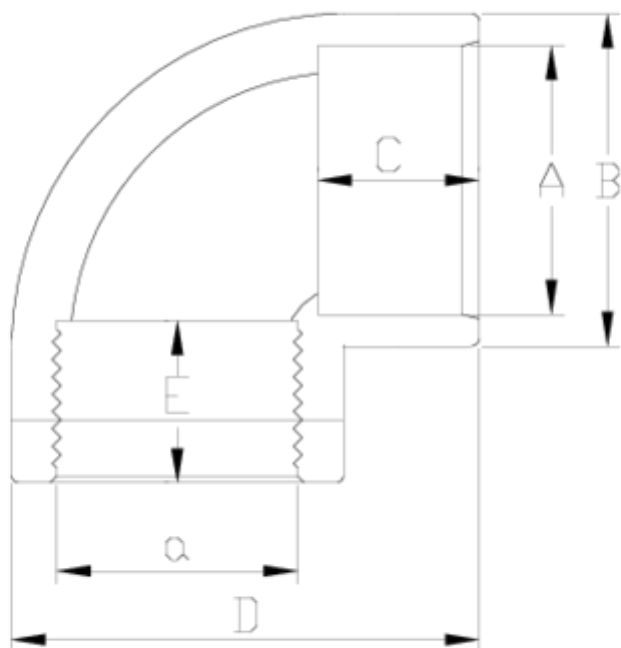
PVC-U pressure fittings

90° elbow, reinforced female threaded outlet 1

ITEM 433



REFERENCE	DESCRIPTION	Net weight	Volumen (m ³)	Gross weight	Unidades lote
1002061	90° ELBOW PLAIN/F. THREADED REINF. 75-1 1/2"	0.624	0.031294	12.48	20
1002062	90° ELBOW PLAIN/F. THREADED REINF. 75-2"	0.5804	0.031294	11.608	20
1002063	90° ELBOW PLAIN/F. THREADED REINF. 90-2"	0.91	0.0368	11.608	12
1002064	90° ELBOW PLAIN/F. THREADED REINF. 90-2 1/2"	1.02	0.0368	12.92	12
1002160	90° ELBOW PLAIN/F. THREADED REINF. 20-1/2"	0.024726	0.008918	2.66	100
1002161	90° ELBOW PLAIN/F. THREADED REINF. 25-3/4"	0.03881	0.02243	4.3687	100
1002162	90° ELBOW PLAIN/F. THREADED REINF. 32-1"	0.07	0.022435	7.823	100
1002163	90° ELBOW PLAIN/F. THREADED REINF. 40-1 1/4"	0.12677	0.031294	13.25	100
1002164	90° ELBOW PLAIN/F. THREADED REINF. 50-1 1/2"	0.173232	0.047171	17.965	100
1002165	90° ELBOW PLAIN/F. THREADED REINF. 63-2"	0.3093	0.04879	16.0403	50
1002166	90° ELBOW PLAIN/F. THREADED REINF. 75-2 1/2"	0.4561	0.048799	14.443	30
1002167	90° ELBOW PLAIN/F. THREADED REINF. 90-3"	0.8758	0.04836	16.43	18



ITEM 433 | 90° elbow, reinforced female threaded outlet 1

Código	A-a	Peso (g)	B	C	D	E	PN	ROSCA
02160	20-1/2"	32	27	16	41	16	PN10	BSP
02161	25-3/4"	45	33	19	50	17	PN10	BSP
02162	32-1"	79	41	22	61	21	PN10	BSP
02163	40-1 1/4"	134	50	26	74	23	PN10	BSP
02164	50-1 1/2"	163	61	31	88	24	PN10	BSP
02165	63-2"	296	75	38	109	28	PN10	BSP
02061	75-1 1/2"	614	89	44	129	24	PN10	BSP
02062	75-2"	589	89	44	129	28	PN10	BSP
02166	75-2 1/2"	452	89	44	129	32	PN10	BSP
02063	90-2"	1070	108	51	156	28	PN10	BSP



ITEM 433 | 90° elbow, reinforced female threaded outlet 1

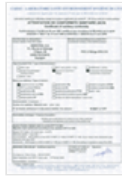
02064	90-2 1/2"	1025	108	51	156	32	PN10	BSP
02167	90-3"	861	108	51	156	35	PN10	BSP



Product Documents



Product Certificates



Company Certificates

