



## PVC-U pressure fittings



REFERENCE	DESCRIPTION	Net weight	Volumen (m <sup>3</sup> )	contenido.peso bruto	Unidades lote
1002037	PVC ADAPTOR BUSHES, M. THREAD 16-20-1/2"	0.010	0.00472	1.51	150
1002728	PVC ADAPTOR BUSHES, M. THREAD 25-32-1/2"	0.024	0.00892	2.60	100
1002729	PVC ADAPTOR BUSHES, M. THREAD 25-32-1"	0.030	0.00892	3.21	100
1002731	PVC ADAPTOR BUSHES, M. THREAD 32-40-3/4"	0.039	0.00892	3.28	80
1002732	PVC ADAPTOR BUSHES, M. THREAD 32-40-1"	0.042	0.01553	3.66	80
1002733	PVC ADAPTOR BUSHES, M. THREAD 32-40-1 1/4"	0.047	0.01553	4.05	80
1002741	PVC ADAPTOR BUSHES, M. THREAD 40-50-1"	0.074	0.01553	5.51	70
1002742	PVC ADAPTOR BUSHES, M. THREAD 40-50-1 1/4"	0.080	0.02244	6.09	70
1002743	PVC ADAPTOR BUSHES, M. THREAD 40-50-1 1/2"	0.079	0.02244	6.00	70
1002751	PVC ADAPTOR BUSHES, M. THREAD 50-63-1"	0.121	0.02244	7.76	60
1002752	PVC ADAPTOR BUSHES, M. THREAD 50-63-1 1/4"	0.121	0.02244	7.74	60
1002753	PVC ADAPTOR BUSHES, M. THREAD 50-63-1 1/2"	0.124	0.03129	7.90	60
1002754	PVC ADAPTOR BUSHES, M. THREAD 50-63-2"	0.129	0.03129	8.30	60
1002761	PVC ADAPTOR BUSHES, M. THREAD 63-75-1"	0.168	0.04717	15.75	90
1002762	PVC ADAPTOR BUSHES, M. THREAD 63-75-1 1/4"	0.170	0.06347	16.09	90
1002763	PVC ADAPTOR BUSHES, M. THREAD 63-75-1 1/2"	0.170	0.06347	16.09	90
1002764	PVC ADAPTOR BUSHES, M. THREAD 63-75-2"	0.177	0.06347	16.76	90
1002765	PVC ADAPTOR BUSHES, M. THREAD 63-75-2 1/2"	0.201	0.06347	18.88	90
1002766	PVC ADAPTOR BUSHES, M. THREAD 75-90-2 1/2"	0.298	0.04717	14.04	45
1002767	PVC ADAPTOR BUSHES, M. THREAD 90-110-3"	0.511	0.04717	13.42	25
1002768	PVC ADAPTOR BUSHES, M. THREAD 110-125-3"	0.584	0.03264	9.99	16
1002769	PVC ADAPTOR BUSHES, M. THREAD 75-90-2"	0.281	0.04717	13.31	45





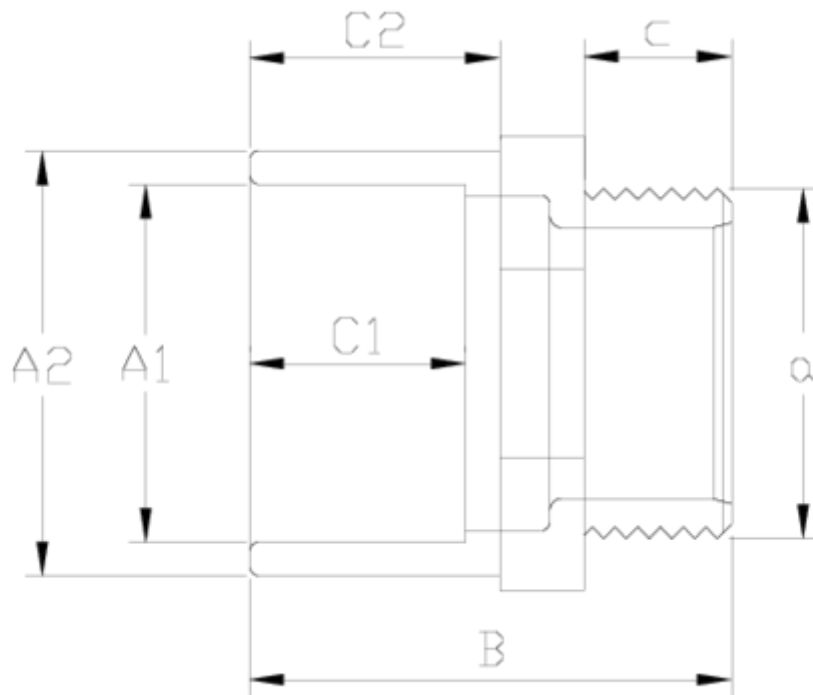
## PVC-U pressure fittings

# Plain/threaded nipple

## ITEM 020

REFERENCE	DESCRIPTION	Net weight	Volumen (m <sup>3</sup> )	Gross weight	Unidades lote
1002771	PVC ADAPTOR BUSHES, M. THREAD 90-110-2 1/2"	0.507	0.03682	13.21	25
1002800	PVC ADAPTOR BUSHES, M. THREAD 90-110-4"	0.594	0.06347	15.68	25





## ITEM 020 | Plain/threaded nipple

Codigo	A1-A2 x a	Peso (g)	B	C1	C2	c	PN	ROSCA
02000	16-20x3/8"	7	35	15	16	12	PN10	BSP
02037	16-20x1/2"	8	37	15	16	14	PN10	BSP
02001	20-25x1/2"	14	38	16	19	14	PN10	BSP
02728	25-32x1/2"	24	48	19	22	14	PN10	BSP
02002	25-32x3/4"	26	51	19	22	17	PN10	BSP
02729	25-32x1"	29	53	19	22	19	PN10	BSP
02731	32-40x3/4"	38	54	22	26	16	PN10	BSP
02732	32-40x1"	41	57	22	26	19	PN10	BSP
02733	32-40x1 1/4"	45	59	22	26	22	PN10	BSP
02741	40-50x1"	72	64	26	31	19	PN10	BSP

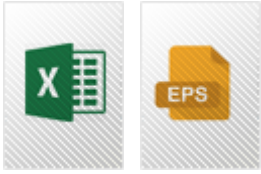


## ITEM 020 | Plain/threaded nipple

02742	40-50x1 1/4"	75	65	26	31	22	PN10	BSP
02743	40-50x1 1/2"	79	66	26	31	22	PN10	BSP
02751	50-63x1"	114	71	31	38	19	PN10	BSP
02752	50-63x1 1/4"	118	74	31	38	22	PN10	BSP
02753	50-63x1 1/2"	121	74	31	38	22	PN10	BSP
02754	50-63x2"	128	78	31	38	26	PN10	BSP
02761	63-75x1"	164	79	38	44	19	PN10	BSP
02762	63-75x1 1/4"	16	81	38	44	22	PN10	BSP
02763	63-75x1 1/2"	172	81	38	44	22	PN10	BSP
02764	63-75x2"	173	85	38	44	26	PN10	BSP
02765	63-75x2 1/2"	200	89	38	44	31	PN10	BSP
02769	75-90x2"	275	93	44	51	26	PN10	BSP
02766	75-90x2 1/2"	294	98	44	51	31	PN10	BSP
02770	75-90x3"	345	100	44	51	33	PN10	BSP
02771	90-110x2 1/2"	490	109	51	61	31	PN10	BSP
02767	90-110x3"	493	111	51	61	33	PN10	BSP
02800	90-110x4"	525	118	51	61	40	PN10	BSP
02768	110-125x3"	508	120	61	69	33	PN10	BSP
02009	110-125x4"	532	127	61	69	40	PN10	BSP



## Product Documents



## Product Certificates

## Company Certificates

