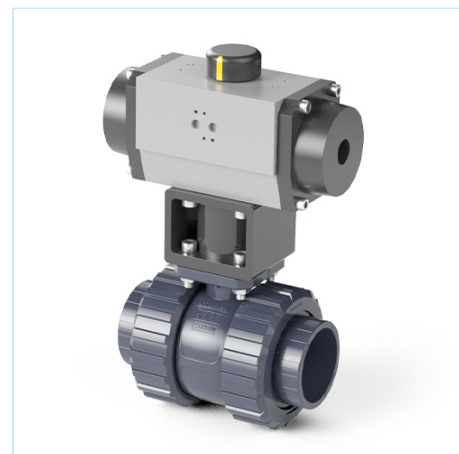




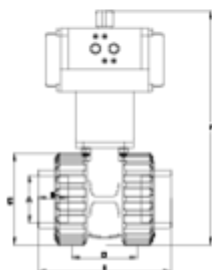
## 'Basic' ball valves

# Solvent socket outlet -Double acting spring return actuator - PFTE

## ITEM 251



REFERENCE	DESCRIPTION	Net weight	Volumen (m <sup>3</sup> )	Gross weight	Unidades lote
1011329	BALL V. D/ACTING,NEUM. ACT,SOLV. S. 20	1.7476	0.00891	1.935	1
1011330	BALL V. D/ACTING,NEUM. ACT,SOLV. S. 25	1.6066	0.022435	2.0943	1
1011331	BALL V. D/ACTING,NEUM. ACT,SOLV. S. 32	1.731	0.00891	1.97	1
1011332	BALL V. D/ACTING,NEUM. ACT,SOLV. S. 40	2.542	0.00891	2.7294	1
1011333	BALL V. D/ACTING,NEUM. ACT,SOLV. S. 50	2.464	0.00891	2.7224	1
1011334	BALL V. D/ACTING,NEUM. ACT,SOLV. S. 63	2.5108	0.01553	2.8375	1
1011335	BALL V. D/ACTING,NEUM. ACT,SOLV. S. 75	7.1247	0.04879	7.7	1
1011336	BALL V. D/ACTING,NEUM. ACT,SOLV. S. 90	8.0481	0.044603	8.778	1
1011337	BALL V. D/ACTING,NEUM. ACT,SOLV. S. 110	8.104	0.044603	8.94	1
1011338	BALL V. D/ACTING,NEUM. ACT,SOLV. S. 125	12.336	0.044603	13.03	1
1011678	BALL V. D/ACTING,NEUM. ACT,FLANGE. 160	22.955	0.16	25.41	1
1011838	BALL V. D/ACTING,NEUM. ACT,SOLV. S. 140	18.35	0.13096	20.646	1



## ITEM 251 | Solvent socket outlet -Double acting spring return actuator - PFTE

CÓDIGO	A	PESO (g)	DN	Actuador	B	C	D	E	F	G	PN	MEDIDA
11329	20	2348	15	H032DE	16	52	47	84	211	117	PN16	MÉTRICO
11330	25	2386	20	H032DE	19	59	51	96	219	117	PN16	MÉTRICO
11331	32	2498	25	H050DE	23	70	66	117	230	138	PN16	MÉTRICO
11332	40	2542	32	H050DE	25	84	72	132	249	138	PN16	MÉTRICO
11333	50	2464	40	H050DE	31	99	77	149	267	138	PN16	MÉTRICO
11334	63	2511	50	H050DE	38	121	90	173	352	138	PN16	MÉTRICO
11335	75	5917	65	H075DE	45	151	121	215	426	210	PN10	MÉTRICO
11336	90	7505	80	H075DE	51	175	141	255	450	210	PN10	MÉTRICO
11337	110	8104	100	H075DE	61	210	155	267	477	210	PN10	MÉTRICO
11338	125	9500	113	H075DE	71	228	161	328	479	210	PN10	MÉTRICO

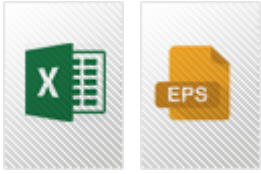


## ITEM 251 | Solvent socket outlet -Double acting spring return actuator - PFTE

11838	140	18350	125	H085DE	76	278	195	405	=396.69+142+30	228	<b>PN10</b>	MÉTRICO
11678	160	25460	150	H085DE	101	284	153	350	=433+142+30	228	<b>PN 6</b>	MÉTRICO



## Product Documents



## Product Certificates



## Company Certificates

