



Collarines toma

Collarín de toma simple de 6 tornillos

ITEM 125



REFERENCIA	DESCRIPCIÓN	Peso neto	Volumen (m ³)	contenido.peso bruto	Unidades lote
1003038	COLLARIN TOMA SIMPLE 140-1"	0.974969	0.061499	16.56	16
1003039	COLLARIN TOMA SIMPLE 140-1 1/4	0.988719	0.061499	16.78	16
1003040	COLLARIN TOMA SIMPLE 140-1 1/2	0.992156	0.061499	16.835	16
1003041	COLLARIN TOMA SIMPLE 140-2"	0.998406	0.061499	16.935	16
1003042	COLLARIN TOMA SIMPLE 140-3"	1.001219	0.061499	16.98	16
1003043	COLLARIN TOMA SIMPLE 160-1"	1.141219	0.061499	19.22	16
1003044	COLLARIN TOMA SIMPLE 160-1 1/4	1.145594	0.061499	19.29	16
1003045	COLLARIN TOMA SIMPLE 160-1 1/2	1.146219	0.061499	19.3	16
1003046	COLLARIN TOMA SIMPLE 160-2"	1.153406	0.061499	19.415	16
1003047	COLLARIN TOMA SIMPLE 160-3"	1.160906	0.061499	19.535	16
1003048	COLLARIN TOMA SIMPLE 200-1 1/4	1.875563	0.061499	15.945	8
1003049	COLLARIN TOMA SIMPLE 200-1 1/2	1.890563	0.061499	16.065	8
1003050	COLLARIN TOMA SIMPLE 200-2"	1.924938	0.061499	16.34	8
1003051	COLLARIN TOMA SIMPLE 200-3"	1.908063	0.061499	16.205	8
1003052	COLLARIN TOMA SIMPLE 200-4"	1.954938	0.061499	16.58	8
1003109	COLLARIN TOMA SIMPLE 140-2 1/2"	1.057156	0.061499	17.875	16
1003111	COLLARIN TOMA SIMPLE 160-2 1/2"	1.195321	0.061499	17.69	14
1003113	COLLARIN TOMA SIMPLE 200-2 1/2"	1.972438	0.061499	16.72	8
1003127	COLLARIN TOMA SIMPLE 160-1/2"	1.135094	0.061499	19.122	16
1003131	COLLARIN TOMA SIMPLE 160-3/4"	1.145594	0.061499	19.29	16
1003135	COLLARIN TOMA SIMPLE 140-1/2"	0.985906	0.061499	16.735	16
1003139	COLLARIN TOMA SIMPLE 140-3/4"	0.986531	0.061499	16.745	16
1003289	COLLARIN TOMA SIMPLE 180-1"	1.539938	0.06149	13.24	8



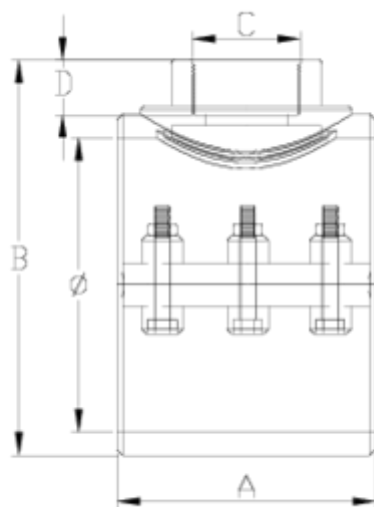


Collarines toma

Collarín de toma simple de 6 tornillos ITEM 125



REFERENCIA	DESCRIPCIÓN	Peso neto	Volumen (m ³)	Peso bruto	Unidades lote
1003290	COLLARIN TOMA SIMPLE 180-1 1/4"	1.5296	0.031294	12.7337	8
1003291	COLLARIN TOMA SIMPLE 180-1 1/2"	1.5112	0.031294	13.01	8
1003292	COLLARIN TOMA SIMPLE 180-2"	1.5296	0.031294	12.7337	8
1003293	COLLARIN TOMA SIMPLE 180-2 1/2"	1.5296	0.031294	12.7337	8
1003294	COLLARIN TOMA SIMPLE 180-3"	1.5296	0.031294	12.7337	8



ITEM 125 | Collar de toma simple de 6 tornillos

Código	f tubo - C	Peso (g)	A	B	D	PN	TIPO ROSCA
03135	140 - 1/2"	1040	134	185	16	PN10	BSP
03139	140 - 3/4"	1045	134	185	17	PN10	BSP
03038	140 - 1"	995	134	190	21	PN10	BSP
03039	140 - 1 1/4"	1000	134	195	23	PN10	BSP
03040	140 - 1 1/2"	995	134	195	31	PN10	BSP
03041	140 - 2"	1005	134	203	38	PN10	BSP
03109	140 - 2 1/2"	1055	134	203	44	PN10	BSP
03042	140 - 3"	1030	134	212	53	PN10	BSP
03127	160 - 1/2"	1090	136	210	16	PN10	BSP
03131	160 - 3/4"	1095	136	210	17	PN10	BSP

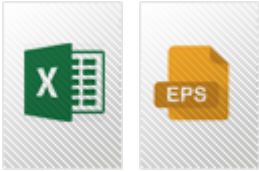


ITEM 125 | Collar??n de toma simple de 6 tornillos

03043	160 - 1"	1120	136	210	21	PN10	BSP
03044	160 - 1 1/4"	1125	136	210	23	PN10	BSP
03045	160 - 1 1/2"	1155	136	210	31	PN10	BSP
03046	160 - 2"	1165	136	218	38	PN10	BSP
03111	160 - 2 1/2"	1215	136	218	44	PN10	BSP
03047	160 - 3"	1185	136	225	53	PN10	BSP
03289	180 - 1"	1346	152	225	21	PN10	BSP
03290	180 - 1 1/4"	1351	152	225	23	PN10	BSP
03291	180 - 1 1/2"	1346	152	225	31	PN10	BSP
03292	180 - 2"	1356	152	230	38	PN10	BSP
03293	180 - 2 1/2"	1387	152	230	44	PN10	BSP
03294	180-3"	1367	152	238	53	PN10	BSP
03048	200 - 1 1/4"	1965	173	244	23	PN6	BSP
03049	200 - 1 1/2"	1958	173	250	31	PN6	BSP
03050	200 - 2"	1974	173	254	38	PN6	BSP
03113	200 - 2 1/2"	2105	173	254	44	PN6	BSP
03051	200 - 3"	1974	173	266	53	PN6	BSP
03052	200 - 4"	2034	173	273	61	PN6	BSP



Documentación de Producto



Certificados de Producto

Certificados de Empresa

