

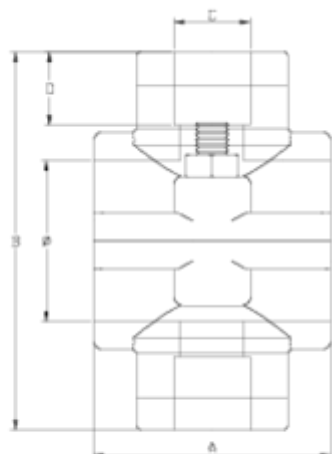


Collarines toma

Collarín toma doble reforzado 2 tornillos ITEM 133



REFERENCIA	DESCRIPCIÓN	Peso neto	Volumen (m ³)	Peso bruto	Unidades lote
1003126	COLLARIN TOMA DOBLE REF. 32-1"	0.1817	0.031294	11.03	60
1003153	COLLARIN TOMA DOBLE REF. 20-1/2"	0.1165	0.022435	9.86	80
1003154	COLLARIN TOMA DOBLE REF. 20-3/4"	0.1095	0.022435	9.3	80
1003300	COLLARIN TOMA DOBLE REF. 25-1/2"	0.1082	0.022435	9.1417	80
1003301	COLLARIN TOMA DOBLE REF. 25-3/4"	0.104404	0.022435	9.04	80
1003302	COLLARIN TOMA DOBLE REF. 32-1/2"	0.136455	0.03129	8.7603	60
1003303	COLLARIN TOMA DOBLE REF. 32-3/4"	0.141	0.022435	8.96	60
1003304	COLLARIN TOMA DOBLE REF. 40-1/2"	0.17419	0.031294	9.345	50
1003305	COLLARIN TOMA DOBLE REF. 40-3/4"	0.169	0.031294	9.472	50
1003306	COLLARIN TOMA DOBLE REF. 40-1"	0.183	0.031294	9.928	50
1003307	COLLARIN TOMA DOBLE REF. 50-1/2"	0.156551	0.03129	7.6178	45
1003308	COLLARIN TOMA DOBLE REF. 50-3/4"	0.154329	0.03129	7.5178	45
1003309	COLLARIN TOMA DOBLE REF. 50-1"	0.175	0.031294	8.68	45



ITEM 133 | Collarín toma doble reforzado 2 tornillos

Código	f tubo - C	Peso (g)	A	B	D	PN	TIPO ROSCA
03153	20 - 1/2"	82	43	63	16	PN16	BSP
03154	20 - 3/4"	88	43	63	17	PN16	BSP
03300	25 - 1/2"	98	45	71	16	PN16	BSP
03301	25 - 3/4"	95	45	71	17	PN16	BSP
03302	32 - 1/2"	131	49	84	16	PN16	BSP
03303	32 - 3/4"	138	49	84	17	PN16	BSP
03126	32 - 1"	194	59	92	21	PN16	BSP
03304	40 - 1/2"	160	59	92	16	PN16	BSP
03305	40 - 3/4"	167	59	92	17	PN16	BSP
03306	40 - 1"	183	59	92	21	PN16	BSP

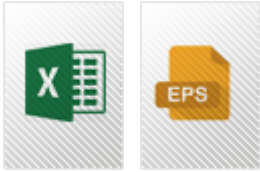


ITEM 133 | Collarín toma doble reforzado 2 tornillos

03307	50 - 1/2"	159	52	100	16	PN16	BSP
03308	50 - 3/4"	165	52	100	17	PN16	BSP
03309	50 - 1"	188	52	100	21	PN16	BSP



Documentación de Producto



Certificados de Producto

Certificados de Empresa

