



Collarines toma

Collarín toma doble reforzado 4 tornillos ITEM 135



REFERENCIA	DESCRIPCIÓN	Peso neto	Volumen (m ³)	Peso bruto	Unidades lote
1003118	COLLARIN TOMA DOBLE REF. 110-1/2"	0.50814	0.06149	13.624	25
1003122	COLLARIN TOMA DOBLE REF. 125-1/2"	0.6266	0.061499	18.5248	28
1003146	COLLARIN TOMA DOBLE REF. 50-1 1/4"	0.3394	0.06149	16.738	45
1003310	COLLARIN TOMA DOBLE REF. 63-1/2"	0.278412	0.041172	17.76	60
1003311	COLLARIN TOMA DOBLE REF. 63-3/4"	0.262912	0.041172	16.83	60
1003312	COLLARIN TOMA DOBLE REF. 63-1"	0.292662	0.048799	18.615	60
1003313	COLLARIN TOMA DOBLE REF. 63 1 1/4"	0.325162	0.06347	20.565	60
1003314	COLLARIN TOMA DOBLE REF. 63 1 1/2"	0.354995	0.06149	22.22	60
1003315	COLLARIN TOMA DOBLE REF. 75-1/2"	0.3406	0.044603	12.93	35
1003316	COLLARIN TOMA DOBLE REF. 75 3/4"	0.361317	0.0446	13.38	35
1003317	COLLARIN TOMA DOBLE REF. 75-1"	0.3776	0.06347	14.045	35
1003318	COLLARIN TOMA DOBLE REF. 75-1 1/4"	0.414	0.061499	23.309	35
1003319	COLLARIN TOMA DOBLE REF. 75-1 1/2"	0.424	0.061499	16.24	35
1003320	COLLARIN TOMA DOBLE REF. 75-2"	0.511	0.06347	18.715	35
1003321	COLLARIN TOMA DOBLE REF. 90-1/2"	0.389003	0.0446	12.4	30
1003322	COLLARIN TOMA DOBLE REF. 90-3/4"	0.652503	0.041172	20.545	30
1003323	COLLARIN TOMA DOBLE REF. 90-1"	0.4082	0.0446	12.94	30
1003324	COLLARIN TOMA DOBLE REF. 90-1 1/4"	0.447	0.061499	21.108	30
1003325	COLLARIN TOMA DOBLE REF. 90-1 1/2"	0.463837	0.061499	14.885	30
1003326	COLLARIN TOMA DOBLE REF. 90-2"	0.54367	0.061499	17.0215	30
1003327	COLLARIN TOMA DOBLE REF. 110-3/4"	0.48458	0.063473	13.33	25
1003328	COLLARIN TOMA DOBLE REF. 110-1"	0.50118	0.063473	13.745	25
1003329	COLLARIN TOMA DOBLE REF. 110-1 1/4"	0.56518	0.06149	15.05	25



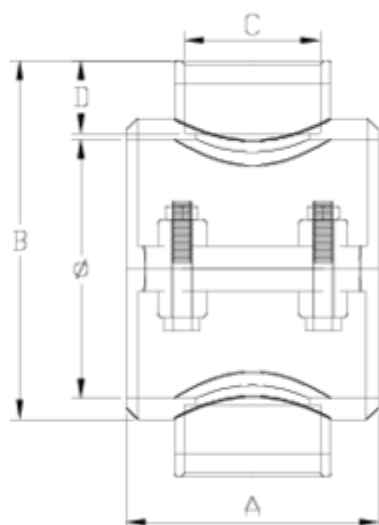


Collarines toma

Collarín toma doble reforzado 4 tornillos ITEM 135



REFERENCIA	DESCRIPCIÓN	Peso neto	Volumen (m ³)	contenido.Peso bruto	Unidades lote
1003330	COLLARIN TOMA DOBLE REF. 110-1 1/2"	0.585	0.063473	18.53	25
1003331	COLLARIN TOMA DOBLE REF. 110-2"	1.1565	0.063473	11.94	20
1003332	COLLARIN TOMA DOBLE REF. 110-2 1/2"	0.834	0.06149	17.254	20
1003333	COLLARIN TOMA DOBLE REF. 125-3/4"	0.591	0.061499	12.784	28
1003334	COLLARIN TOMA DOBLE REF. 125-1"	0.637	0.061499	13.74	28
1003335	COLLARIN TOMA DOBLE REF. 125-1 1/4"	0.675304	0.061499	19.829	28
1003336	COLLARIN TOMA DOBLE REF. 125-1 1/2"	0.681	0.061499	14.584	28
1003337	COLLARIN TOMA DOBLE REF. 125-2"	0.70958	0.061499	18.685	25
1003338	COLLARIN TOMA DOBLE REF. 125-2 1/2"	0.881	0.086775	23.005	25



ITEM 135 | Collar de toma doble reforzado 4 tornillos

Código	f tubo - C	Peso (g)	A	B	D	PN	TIPO ROSCA
03146	50 - 1 1/4"	357.68	70	123	23	PN16	BSP
03310	63 - 1/2"	281.44	70	115	16	PN16	BSP
03311	63 - 3/4"	284.32	70	115	17	PN16	BSP
03312	63 - 1"	299.28	70	123	21	PN16	BSP
03313	63 - 1 1/4"	314	70	123	23	PN16	BSP
03314	63 - 1 1/2"	337.44	70	123	31	PN16	BSP
03315	75 - 1/2"	371.04	85	135	16	PN10	BSP
03316	75 - 3/4"	366.08	85	130	17	PN10	BSP
03317	75 - 1"	378.8	85	135	21	PN10	BSP
03318	75 - 1 1/4"	402.48	85	139	23	PN10	BSP

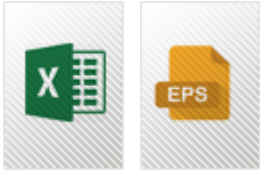


ITEM 135 | Collar??n toma doble reforzado 4 tornillos

03319	75 - 1 1/2"	414.72	85	139	31	PN10	BSP
03320	75 - 2"	461.92	85	147	38	PN10	BSP
03321	90 - 1/2"	396.8	87	144	16	PN10	BSP
03322	90 - 3/4"	406.4	87	144	17	PN10	BSP
03323	90 - 1"	419.12	87	150	21	PN10	BSP
03324	90 - 1 1/4"	440.56	87	154	23	PN10	BSP
03325	90 - 1 1/2"	457.28	87	154	31	PN10	BSP
03326	90 - 2"	498.88	87	162	38	PN10	BSP
03118	110 - 1/2"	542.4	104	164	16	PN10	BSP
03327	110 - 3/4"	538.56	104	164	17	PN10	BSP
03328	110 - 1"	563.6	104	170	21	PN10	BSP
03329	110 - 1 1/4"	578.32	104	180	23	PN10	BSP
03330	110 - 1 1/2"	599.52	104	180	31	PN10	BSP
03331	110 - 2"	643.36	104	182	38	PN10	BSP
03332	110 - 2 1/2"	733.76	104	196	44	PN10	BSP
03122	125 - 1/2"	676.8	101	185	16	PN10	BSP
03333	125 - 3/4"	643.84	101	185	17	PN10	BSP
03334	125 - 1"	673.36	101	189	21	PN10	BSP
03335	125 - 1 1/4"	684.72	101	197	23	PN10	BSP
03336	125 - 1 1/2"	707.04	101	197	31	PN10	BSP
03337	125 - 2"	722.88	101	203	38	PN10	BSP
03338	125 - 2 1/2"	814.4	101	223	44	PN10	BSP



Documentación de Producto



Certificados de Producto

Certificados de Empresa

