

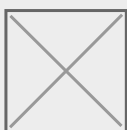


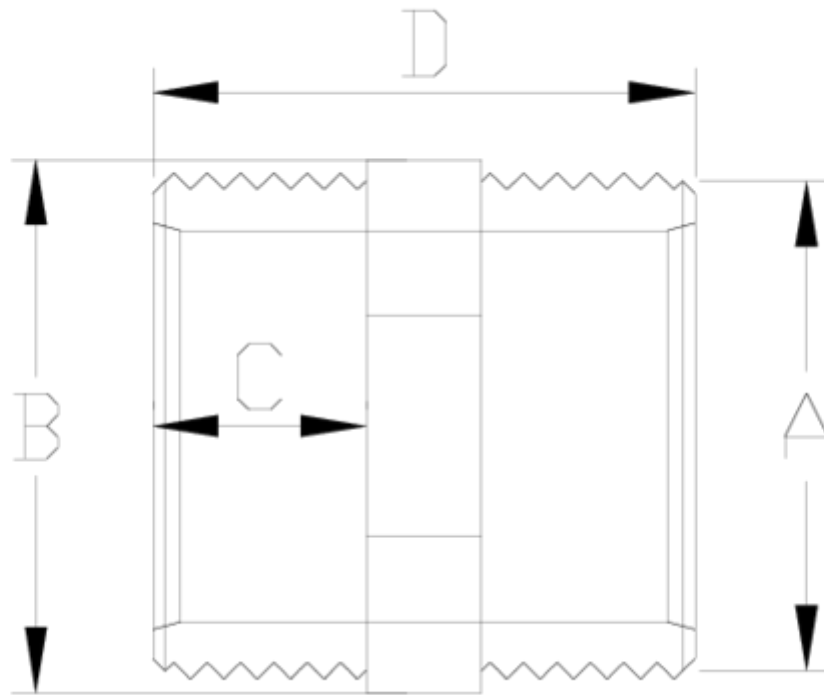
Acessórios de pressão PVC-U

Niple m-m PVC

ITEM 017

REFERÊNCIA	DESCRIÇÃO	Peso líquido	Volume (m ³)	Peso bruto	Unidades por lote
1002401	Niple M/M 1/2"-1/2"	0.013676	0.00472	1.49	100
1002402	Niple M/M 3/4"-3/4"	0.02	0.008918	2.1874	100
1002403	Niple M/M 1"-1"	0.04	0.015532	4.3267	100
1002404	Niple M/M 1 1/4"-1 1/4"	0.053923	0.022435	5.88	100
1002405	Niple M/M 1 1/2"-1 1/2"	0.070523	0.022435	7.54	100
1002406	Niple M/M 2"-2"	0.125	0.022435	6.7377	50
1002407	Niple M/M 2 1/2"- 2 1/2"	0.171233	0.031294	5.71	30
1002408	Niple M/M 3"-3"	0.24	0.01553	2.8877	10
1002409	Niple M/M 4"-4"	0.41	0.015532	2.7867	6





ITEM 017 | Niple m-m PVC

Codigo	A	Peso (g)	B	C	D	PN	ROSCA
02401	1/2"	14	29	11	40	PN10	BSP
02402	3/4"	21	34	16	44	PN10	BSP
02403	1"	37	44	19	50	PN10	BSP
02404	1 1/4"	54	50	21	55	PN10	BSP
02405	1 1/2"	71	60	22	57	PN10	BSP
02406	2"	108	70	26	65	PN10	BSP
02407	2 1/2"	175	80	31	75	PN10	BSP
02408	3"-3"	320	108	33	81	PN10	BSP
02409	4"-4"	510	135	38	91	PN10	BSP





Documentación del Producto



Certificados del Producto



Certificados de la Empresa

