

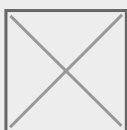
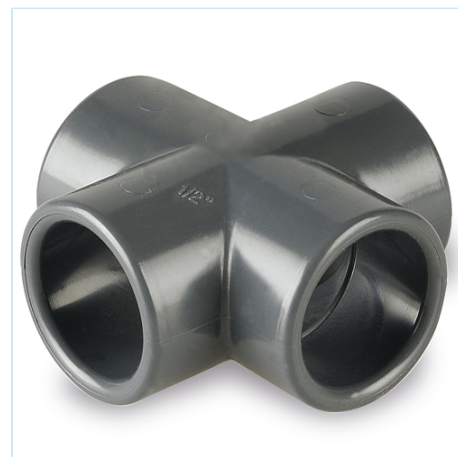


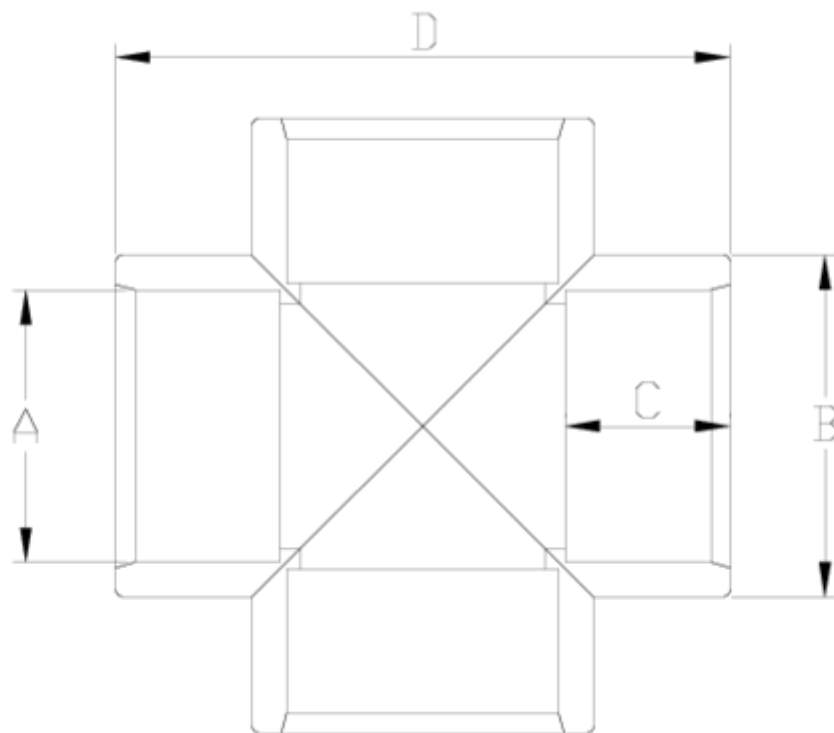
PVC-U pressure fittings

Plain 90° cross

ITEM 015

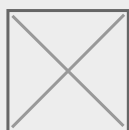
REFERÊNCIA	DESCRIÇÃO	Peso líquido	Volume (m ³)	contenido.peso bruto	Unidades por lote
1001244	CRUZ 90° PVC 40	0.147	0.03682	7.89	50
1001245	CRUZ 90° PVC 50	0.217	0.06347	11.66	50
1001246	CRUZ 90° PVC 63	0.392	0.06347	10.59	25
1001247	CRUZ 90° PVC 75	0.611	0.04880	10.36	16
1001248	CRUZ 90° PVC 90	1.167	0.06150	12.59	10
1001249	CRUZ 90° PVC 110	1.848	0.06150	10.16	5
1001250	CRUZ 90° PVC 125	2.290	0.06150	10.08	4
1001251	CRUZ 90° PVC 140	3.417	0.03682	7.38	2
1001252	CRUZ 90° PVC 160	4.292	0.04880	9.16	2
1001253	CRUZ 90° PVC 200	7.353	0.06347	8.14	1
1001311	CRUZ 90° PVC 20	0.041	0.01553	4.43	100
1001312	CRUZ 90° PVC 25	0.054	0.02244	5.93	100
1001313	CRUZ 90° PVC 32	0.093	0.03129	7.98	80





ITEM 015 | Plain 90° cross

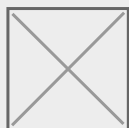
Código	A	Peso (g)	B	C	D	PN	MEDIDA
01311	20	34	27	16	56	PN16	MÉTRICO
01312	25	67	33	19	66	PN16	MÉTRICO
01313	32	112	41	22	82	PN16	MÉTRICO
01244	40	169	50	26	98	PN16	MÉTRICO
01245	50	288	63	31	121	PN16	MÉTRICO
01246	63	495	75	38	160	PN16	MÉTRICO
01247	75	670	89	44	166	PN16	MÉTRICO
01248	90	1142	108	51	203	PN16	MÉTRICO
01249	110	1812	131	61	240	PN16	MÉTRICO
01250	125	2311	145	69	277	PN16	MÉTRICO





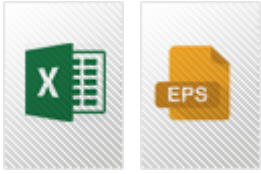
ITEM 015 | Plain 90° cross

01251	140	3200	164	76	305	PN16	MÉTRICO
01252	160	4220	183	86	348	PN10	MÉTRICO
01253	200	6850	225	106	408	PN10	MÉTRICO





Documentación del Producto



Certificados del Producto



Certificados de la Empresa

