

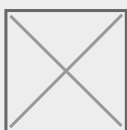


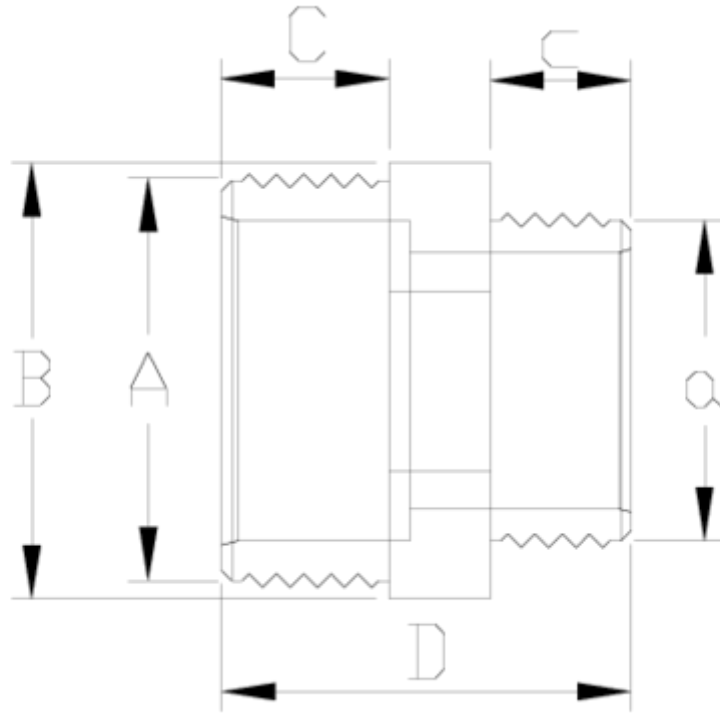
## PVC-U pressure fittings

# Reducing M/M nipple

## ITEM 048

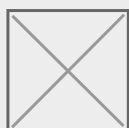
REFERENCIA	DESCRIPCION	Peso líquido	Volume (m <sup>3</sup> )	contenido.peso bruto	Unidades por lote
1002712	MACHON M-M RED 1 1/2"-1/2" BLANCO	0.058	0.01553	6.16	100
1002713	MACHON M-M RED 1 1/2"-3/4" BLANCO	0.060	0.01553	6.39	100
1002714	MACHON M-M RED 1 1/2"-1" BLANCO	0.062	0.01553	6.59	100
1002715	MACHON M-M RED 1 1/2"-1 1/4" BLANCO	0.068	0.01553	7.19	100
1002716	MACHON M-M RED 2"-3/4" BLANCO	0.107	0.02244	5.83	50
1002717	MACHON M-M RED 2"-1" BLANCO	0.093	0.02244	5.06	50
1002718	MACHON M-M RED 2"-1 1/4" BLANCO	0.096	0.02244	5.21	50
1002719	MACHON M-M RED 2"-1 1/2" BLANCO	0.114	0.02244	6.19	50
1002720	MACHON M-M RED 3/4"-1/2" BLANCO	0.023	0.00473	2.33	100
1002721	MACHON M-M RED 1-1/2" BLANCO	0.031	0.00892	3.29	100
1002722	MACHON M-M RED 1"-3/4" BLANCO	0.034	0.00892	3.60	100
1002723	MACHON M-M RED 1 1/4"-1/2" BLANCO	0.046	0.01516	3.78	75
1002724	MACHON M-M RED 1 1/4"-3/4" BLANCO	0.049	0.01516	3.93	75
1002725	MACHON M-M RED 1 1/4"-1" BLANCO	0.052	0.01516	4.16	75





## ITEM 048 | Reducing M/M nipple

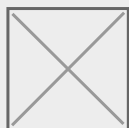
Codigo	A-a	Peso (g)	B	c	C	D	PN	ROSCA
02720	3/4"-1/2"	19	34	11	16	42	PN10	BSP
02721	1"-1/2"	30	44	11	19	47	PN10	BSP
02722	1"-3/4"	33	44	16	19	47	PN10	BSP
02723	1 1/4"-1/2"	44	50	11	21	49	PN10	BSP
02724	1 1/4"-3/4"	47	50	16	21	50	PN10	BSP
02725	1 1/4"-1"	50	50	19	21	53	PN10	BSP
02712	1 1/2"-1/2"	58	60	11	22	49	PN10	BSP
02713	1 1/2"-3/4"	59	60	16	22	51	PN10	BSP
02714	1 1/2"-1"	62	60	19	22	54	PN10	BSP
02715	1 1/2"-1 1/4"	67	60	21	22	56	PN10	BSP





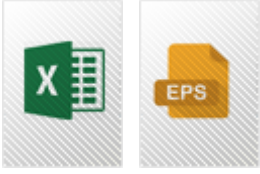
## ITEM 048 | Reducing M/M nipple

02716	2"-3/4"	90	70	16	26	56	<b>PN10</b>	BSP
02717	2"-1"	93	70	19	26	60	<b>PN10</b>	BSP
02718	2"-1 1/4"	95	70	21	26	61	<b>PN10</b>	BSP
02719	2"-1 1/2"	98	70	22	26	61	<b>PN10</b>	BSP

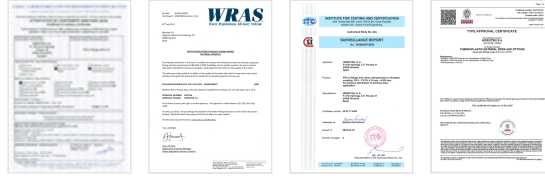




## Documenta????o do Produto



## Certificados do Produto



## Certificados da Empresa

