

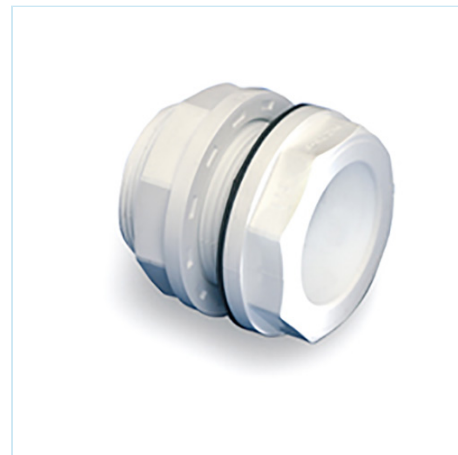


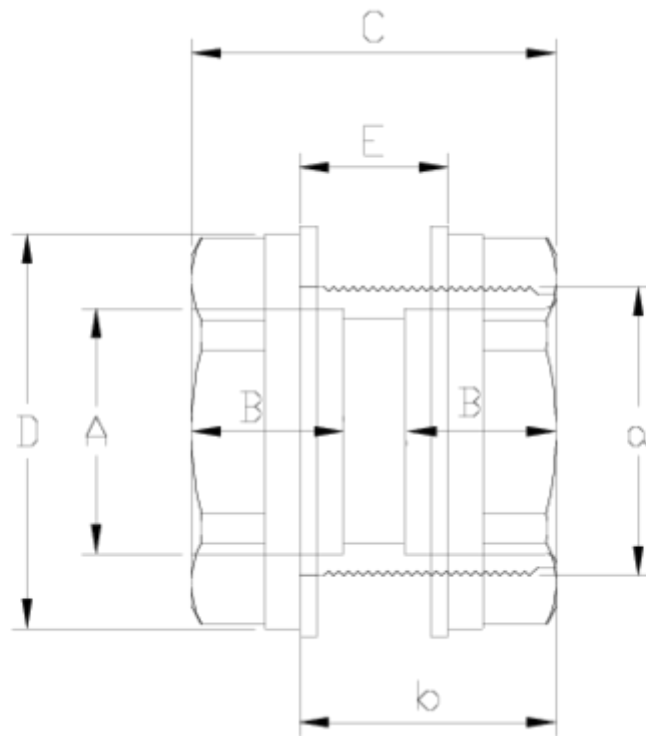
## PVC-U pressure fittings

# Tank adaptor - white range

## ITEM 407

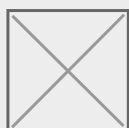
REFERENCIA	DESCRIPCION	Peso líquido	Volumen (m <sup>3</sup> )	contenido.peso bruto	Unidades por lote
1002872	PASAMUROS 25-1" BLANCO EPDM	0.069	0.00892	2.29	30
1002873	PASAMUROS 32-1 1/4" BLANCO EPDM	0.118	0.01553	3.92	30
1002874	PASAMUROS 40-2" BLANCO EPDM	0.286	0.00892	4.76	16
1002875	PASAMUROS 50-2" BLANCO EPDM	0.213	0.00892	3.60	16
1002882	PASAMUROS 25-1" BLANCO VITON	0.068	0.00892	2.21	30
1002883	PASAMUROS 32-1 1/4" BLANCO VITON	0.125	0.01553	4.12	30
1002884	PASAMUROS 40-2" BLANCO VITON	0.280	0.00892	4.68	16
1002885	PASAMUROS 50-2" BLANCO VITON	0.196	0.00892	3.54	16





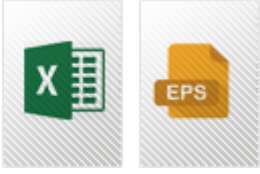
## ITEM 407 | Tank adaptor - white range

Codigo	A-a	Peso (g)	DN	B	b	C	D	E	PN	ROSCA
02872	25 - 1"	76	20	19	47	62	50	38	PN10	BSP
02873	32 - 1 1/4"	112	25	21	53	69	64	33	PN10	BSP
02874	40 - 2"	275	32	26	53	74	81	30	PN10	BSP
02875	50 - 2"	208	40	31	53	74	81	30	PN10	BSP
02882	25 - 1"	76	20	19	47	62	50	38	PN10	BSP
02883	32 - 1 1/4"	112	25	21	53	69	64	33	PN10	BSP
02884	40 - 2"	275	32	26	53	74	81	30	PN10	BSP
02885	50 - 2"	208	40	31	53	74	81	30	PN10	BSP

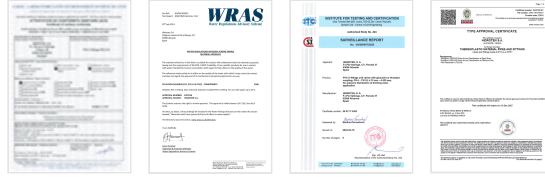




## Documenta????o do Produto



## Certificados do Produto



## Certificados da Empresa

